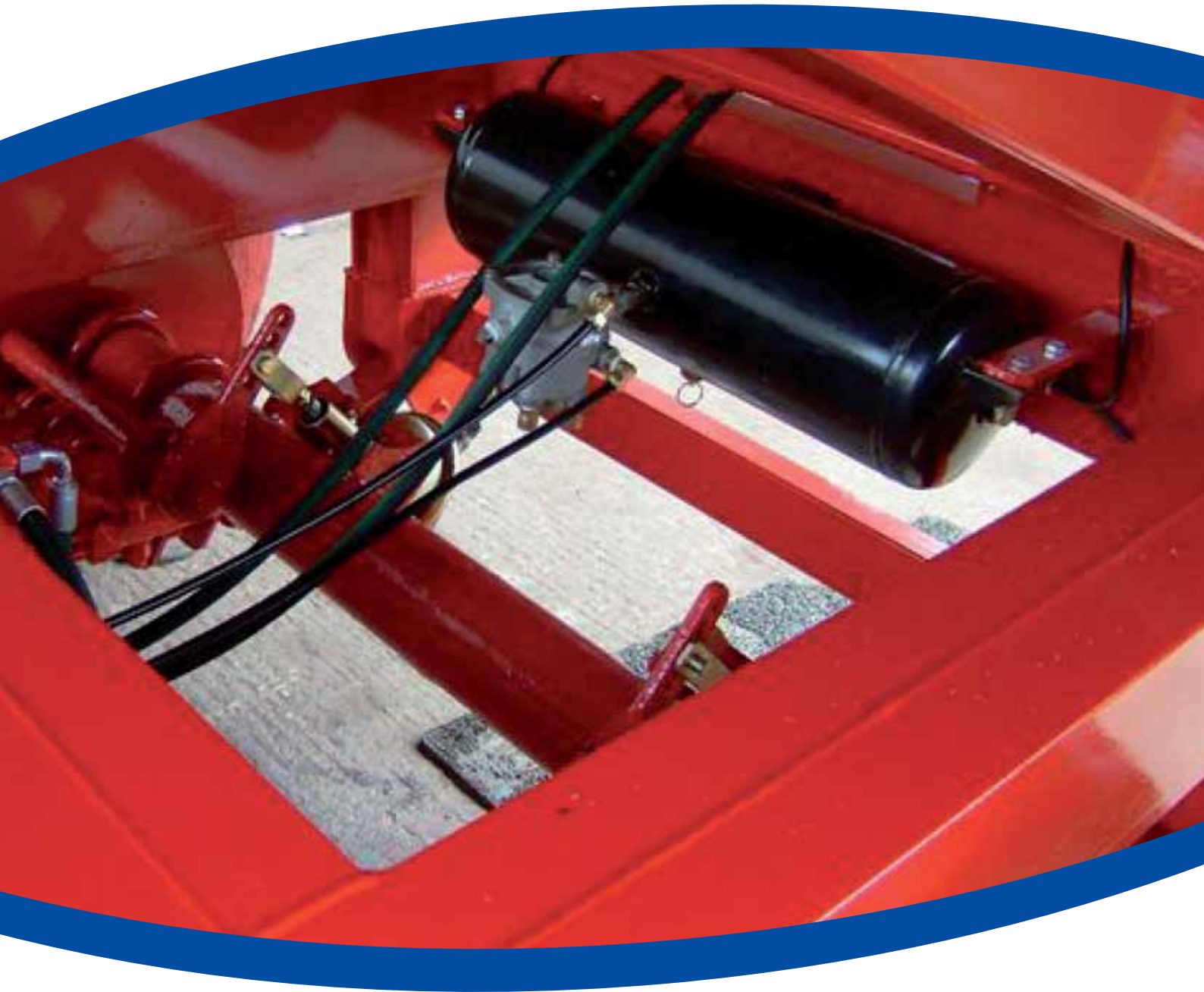


www.mchc.ie

McHUGH

C O M P O N E N T S



Air Brake Components

2011



Relay Valve RV2 Standard

- For use on single axle trailers

WORKING PRESSURE	SEAL KIT TO SUIT	OEM REFERENCE	PART NUMBER
10 bar	770109AB	971 002 150 0	770100AB



Relay Valve

- For use on single axle trailers (1 line)

WORKING PRESSURE	SEAL KIT TO SUIT	OEM REFERENCE	PART NUMBER
10 bar	770609AB	471 003 020 0	770600AB



Relay Valve RV6 Standard

- For use on twin and tri-axle trailers

WORKING PRESSURE	SEAL KIT TO SUIT	OEM REFERENCE	PART NUMBER
10 bar	770509AB	971 002 152 0	770500AB



Relay Valve RV6 Load Sensing

- For use on twin and tri-axle trailers

WORKING PRESSURE	SEAL KIT TO SUIT	OEM REFERENCE	PART NUMBER
10 bar	770209AB	475 712 000 0	770200AB

Replacement Rubber to suit RV6 Load Sensing

DESCRIPTION	PART NUMBER
Replacement rubber only to suit RV6	770205AB

Load Sensing Valve Lower Linkage Kit

DESCRIPTION	PART NUMBER
Lower linkage kit to suit load sensing valve	770202AB



Knuckle Joint Adjuster

DESCRIPTION	LENGTH	PART NUMBER
Knuckle joint adjuster	200mm	770203AB
Knuckle joint adjuster	250mm	770204AB



Shunt Valve

DESCRIPTION	PART NUMBER
Standard shunt valve	770300AB



Shunt Valve (Manual Load Proportioning)

DESCRIPTION	PART NUMBER
Shunt valve manual load proportioning	770400AB



2 Line Quick Release Valve

INLET PORTS	OUTLET PORTS	DESCRIPTION	PART NUMBER
M22	M22 (x2)	2 Line QR valve	770700AB



Silencer to suit 2 Line Quick Release Valve

DESCRIPTION	PART NUMBER
M22 Silencer to suit 770700AB	770701AB



4 Line Quick Release Valve

INLET PORTS	OUTLET PORTS	DESCRIPTION	PART NUMBER
M22	M16 (x4)	4 QR valve	770800AB



Silencer to suit 4 Line Quick Release Valve

DESCRIPTION	PART NUMBER
M22 Silencer to suit 770800AB	770701AB



20 Litre Air Tank / Strap Mounted

DESCRIPTION	PART NUMBER
Air tank 20 litre - less straps 206 x 660	771400AB
Strap to suit 771400AB	771401AB



30 Litre Air Tank / Strap Mounted

DESCRIPTION	PART NUMBER
Air tank 30 litre - less straps 246 x 700	771800AB
Strap to suit 771800AB	771701AB

37 Litre Air Tank / Strap Mounted

DESCRIPTION	PART NUMBER
Air tank 37 litre - less straps 246 x 850	771700AB
Strap to suit 771700AB	771701AB

40 Litre Air Tank / Strap Mounted

DESCRIPTION	PART NUMBER
Air tank 40 litre - less straps 276 x 745	771500AB
Strap to suit 771500AB	771501AB



Air Tanks / End Mounted

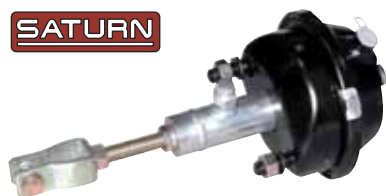
DESCRIPTION	PART NUMBER
Air tank 38 litre end mounted 246 x 815	771600AB
Air tank 50 litre end mounted 300 x 773	771900AB
Air tank 60 litre end mounted 300 x 888	771300AB



Air Tanks / Side Mounted

DESCRIPTION	PART NUMBER
Air tank 60 litre side mounted 310 x 895	771200AB

SATURN



Hydraulic / Pneumatic Brake Actuators-Internal Spring

AIR POT TYPE	HYDRAULIC RAM ROD SIZE	AIR POT PORT	HYDRAULIC RAM PORT	PART NUMBER
20	25	16mm	3/8" BSP	BCDT2025
20	30	16mm	3/8" BSP	BCDT2030
24	30	16mm	3/8" BSP	BCDT2430



The Hydraulic Ram in this system requires an external return spring. Details of return springs are listed below.

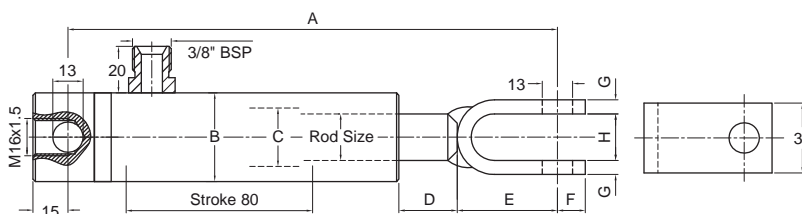


Hydraulic / Pneumatic Brake Actuator

Dual Supply Brake Actuators are available in various combinations of Air Pot and Hydraulic Rams

AIR POT		HYDRAULIC RAM		AIR POT PORT	HYD. RAM PORT	PART NUMBER
TYPE	PART NUMBER	ROD	PART NUMBER			
T12	772100AB	20mm	BC2080TH	16mm Female	3/8" BSP Male	DSBAT12R20
T12	772100AB	25mm	BC2580TH	16mm Female	3/8" BSP Male	DSBAT12R25
T20	772200AB	20mm	BC2080TH	16mm Female	3/8" BSP Male	DSBAT20R20
T20	772200AB	25mm	BC2580TH	16mm Female	3/8" BSP Male	DSBAT20R25
T20	772200AB	30mm	BC3080TH	16mm Female	3/8" BSP Male	DSBAT20R30
T24	772300AB	20mm	BC2080TH	16mm Female	3/8" BSP Male	DSBAT24R20
T24	772300AB	25mm	BC2580TH	16mm Female	3/8" BSP Male	DSBAT24R25
T24	772300AB	30mm	BC3080TH	16mm Female	3/8" BSP Male	DSBAT24R30
T30	772400AB	25mm	BC2580TH	16mm Female	3/8" BSP Male	DSBAT30R25
T30	772400AB	30mm	BC3080TH	16mm Female	3/8" BSP Male	DSBAT30R30

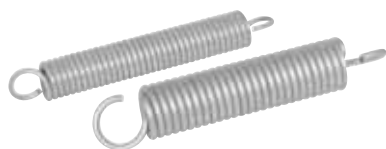
SATURN



Brake Ram c/w Dual Pin Hole / Threaded Base - Pin Hole Clevis

External Spring Return

ROD SIZE	STROKE	DIMENSIONS								MAX WORKING PRESSURE	PORT SIZE MALE	PART NUMBER
		A	B	C	D	E	F	G	H			
20mm	80mm	210	38	25	25	43	12	6	20	250bar	3/8" BSP	BC2080TH
25mm	80mm	230	45	30	28	60	14	8	15	250bar	3/8" BSP	BC2580TH
30mm	80mm	230	45	35	28	60	14	8	15	230bar	3/8" BSP	BC3080TH



Springs to suit

LENGTH	OD	ID	WIRE Ø	PART NUMBER
190mm	27mm	19mm	4mm	BCS190
220mm	38mm	28mm	5mm	BCS220
235mm	27mm	19mm	4mm	BCS235

Full Range of Hydraulic Rams available, including Tipping and Back Door Rams. See our Hydraulics Catalogue for further details.



Pneumatic Brake Actuator c/w Clevis

TYPE	DESCRIPTION	PART NUMBER
T24	Pneumatic brake actuators with clevis	772600AB

Pneumatic Brake Actuator less Clevis

TYPE	DESCRIPTION	PART NUMBER
T12	Pneumatic brake actuators less clevis	772100AB
T16	Pneumatic brake actuators less clevis	772700AB
T20	Pneumatic brake actuators less clevis	772200AB
T30	Pneumatic brake actuators less clevis	772400AB

Clevis to suit Pneumatic Brake Actuator

DESCRIPTION	PART NUMBER
Clevis to suit Pneumatic Brake Actuators T12, T20, T24 and T30	772500AB



Air Tubing

COLOUR	SIZE	PART NUMBER
Black	10 x 1.25	773103AB
Yellow	10 x 1.25	773100AB
Red	10 x 1.25	773105AB
Black	12 x 1.5	773106AB
Yellow	12 x 1.5	773101AB
Red	12 x 1.5	773102AB
Black	18 x 2.0	773104AB



Brake Hose

COLOUR	HOSE ID	WALL THICKNESS	PART NUMBER
Black	13	6	07625020AB



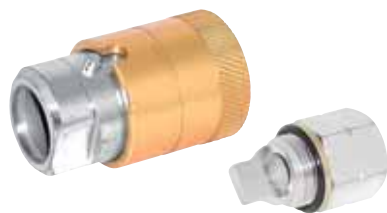
Service and Emergency Air Coils

DESCRIPTION	PART NUMBER
Service line coil - Yellow air coil 22 turns	773200AB
Emergency line coil - Red air coil 22 turns	773201AB



'C' Type Coupling - Male Air Quick Release

DESCRIPTION	PART NUMBER
Quick release male 'C' coupling M22	775100AB



'C' Type Coupling - Female Air Quick Release

DESCRIPTION	PART NUMBER
Quick release female 'C' coupling M22	775200AB
Quick release operating valve M22	775300AB



Parts for fitting Dummy 'C' Type Couplings (Weld-On)

DESCRIPTION	PART NUMBER
Weld-on bush	LSN06E
Adaptor to suit	630-06-22



Parts for fitting Dummy 'C' Type Couplings (Drill Type)

DESCRIPTION	PART NUMBER
Bulkhead for fitting dummy 'C' coupling	774603AB



Palm Coupling

DESCRIPTION	PART NUMBER
Palm coupling M22 x 1.5mm Red	775400AB
Palm coupling M22 x 1.5mm Yellow	775500AB
Palm coupling M22 x 1.5mm Black	775600AB



Handle Set to suit Palm Couplings

DESCRIPTION	PART NUMBER
Handle set to suit palm couplings	775800AB



Hanger to suit Palm Couplings

DESCRIPTION	PART NUMBER
Hanger set to suit palm couplings	775700AB



Stud Tee Test Point

DESCRIPTION	PART NUMBER
Stud tee test point M22 x 10mm	774902AB
Stud tee test point M22 x 12mm	774904AB



Stud Run Test Point

DESCRIPTION	PART NUMBER
Stud run test point M22 x 10mm	774903AB
Stud run test point M22 x 12mm	774905AB



Test Point Coupling

DESCRIPTION	PART NUMBER
Test point coupling M16	774900AB
Test point coupling M22	774901AB



Drain Valve

DESCRIPTION	PART NUMBER
Drain valve M 22mm thread c/w 6ft cable	774400AB
Drain valve M 22mm thread less cable	774401AB



Straight Stud

DESCRIPTION	PART NUMBER
Straight stud 10mm x 1.25 tube - M16mm thread	774100AB
Straight stud 10mm x 1.25 tube - M22mm thread	774101AB
Straight stud 18mm x 2.0 tube - M22mm thread	774103AB
Straight stud 12mm x 1.5 tube - M22 thread	774104AB
Straight stud 12mm x 1.5 tube - M16mm thread	774105AB
Straight stud 12mm x 1.5 tube - M12mm thread	774106AB



Straight Bulkhead Stud

DESCRIPTION	PART NUMBER
Straight bulkhead stud 10mm x 1.25 Tube - M22mm thread	774120AB



Elbow Stud

DESCRIPTION	PART NUMBER
Elbow stud 12mm x 1.5 tube - M16mm thread	774203AB
Elbow stud 10mm x 1.25 tube - M16mm thread	774200AB
Elbow stud 10mm x 1.25 tube - M22mm thread	774202AB
Elbow stud 12mm x 1.5 tube - M22 thread	774204AB
Elbow stud 18mm x 2.0 tube - M22 thread	774205AB
Elbow stud 16mm x 2.0 tube - M22 thread	774206AB
Elbow stud 10mm x 1.25 tube - M22mm thread long drop	774201AB



'T' Stud

DESCRIPTION	PART NUMBER
'T' 12mm x 1.5 tube - 12mm x 1.5 tube - M22mm thread	774300AB



'T' Piece

DESCRIPTION	PART NUMBER
'T' 10mm x 1.25 - 10mm x 1.25 - 10mm x 1.25 tube Tee piece	774301AB
'T' 10mm x 1.25 - 12mm x 1.50 - 10mm x 1.25 tube Tee piece	774302AB

**Straight Stud - Reusable**

DESCRIPTION	PART NUMBER
Stud 10 x 1.25 Tube M16 Push / Pull	778400AB
Stud 12 x 1.5 Tube M16 Push / Pull	778100AB
Stud 12 x 1.5 Tube M22 Push / Pull	778101AB

**Elbow Stud - Reusable**

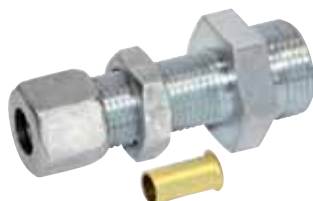
DESCRIPTION	PART NUMBER
Stud 90° 10 x 1.25 Tube M16 Push / Pull	778500AB
Stud 90° 10 x 1.25 Tube M22 Push / Pull	778600AB
Stud 90° 12 x 1.5 Tube M16 Push / Pull	778200AB
Stud 90° 12 x 1.5 Tube M22 Push / Pull	778201AB

**'T' Piece - Reusable**

DESCRIPTION	PART NUMBER
Stud Tee 12 x 1.5 x 3 Tube Push / Pull	778300AB

**Bulkhead Adaptor - Male**

DESCRIPTION	PART NUMBER
Bulkhead adaptor 22mm thread	774600AB
Bulkhead adaptor 16mm x 22mm thread	774603AB
Bulkhead adaptor 22mm - 16mm c/w 10mm inner thread	774601AB
Bulkhead adaptor 22mm - 22mm c/w 16mm inner thread	774602AB

**Compression Bulkhead c/w Insert**

DESCRIPTION	PART NUMBER
M22 Bulkhead x 10L complete with insert	774604AB

**Female Sleeve**

DESCRIPTION	PART NUMBER
Female sleeve M22mm thread	774700AB

**Plug**

DESCRIPTION	PART NUMBER
Plug M16mm thread	774500AB
Plug M22mm thread	774501AB

**Bush**

DESCRIPTION	PART NUMBER
M22 Male x M16 Female bush	774701AB



Brass Hose Tail c/w O' Ring

THREAD	HOSE TAIL	PART NUMBER
1/2" BSP Male	13mm	BRASSHT1213
M22 Male	13mm	774800AB



Thrust Rings / O' Rings

SIZE	DESCRIPTION	PART NUMBER
M16	Thrust Ring M16	777000AB
	O' Ring to suit M16 Thrust Ring	25015OR
M22	Thrust Ring M22	777001AB
	O' Ring to suit M22 Thrust Ring	25020OR



In-Line Filter

DESCRIPTION	PART NUMBER
In-line filter M22	776100AB



**We can supply complete Air Brake Kits to suit your requirements.
Contact a member of our Sales Staff on (01) 4137000
or talk to your Sales Representative for further details.**